

STONEONE
2021

A
B
E
E
O

Stoneone

Gres Porcellanato Digitale

Grès Cérame Digital

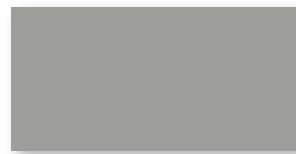
Digital Porcelain

Digital Glasiertes Feinsteinzeug

Specifiche Tecniche



Formato



60x120 - 24"x48"



60x60 - 24"x24"



30x60 - 12"x24"



7,5x60 - 2,9"x24"

Superficie

Pavimento matt
Matt floor
Revêtement de sol mat
Bodenbelag - matt

BEIGE


TAUPE


GREY

DARK

| Formato | Spessore | Descrizione | Codice Prezzo | pz/collo | mq/collo | kg/collo | coll/pallet | mq/europallet | kg/europallet | spallettizzabile |
|---------------|-----------|-----------------|---------------|----------|----------|----------|-------------------|----------------|---------------|------------------|
| Size | Thickness | Description | Price Code | pcs/box | sqm/box | kg/box | box/europallet | sqm/europallet | kg/europallet | spallettizzabile |
| Dimensions | Epaisseur | Description | Code de prix | pc/boite | m/boite | kg/boite | boites/europallet | m/europallet | kg/europallet | spallettizzabile |
| Abmessungen | Stärke | Beschreibung | Preiscode | stk/ktn | qm/ktn | kg/ktn | ktn/europallet | qm/europallet | kg/europallet | spallettisierbar |
| 59,5x119,2 cm | 9,5 mm | FONDO RET. | MQ 47 | 2 | 1,42 | 30 | 36 | 51,12 | 1080 | ● |
| 59,5x59,5 cm | 9,5 mm | FONDO RET. | MQ 39 | 3 | 1,08 | 22 | 40 | 43,2 | 880 | ● |
| 59,5x59,5 cm | 9,5 mm | FONDO RET. GRIP | MQ 44 | 3 | 1,08 | 22 | 40 | 43,2 | 880 | ● |
| 29,65x59,5 cm | 9,5 mm | FONDO RET. | MQ 39 | 5 | 0,9 | 18,75 | 48 | 43,2 | 900 | ● |
| 29,65x59,5 cm | 9,5 mm | FONDO RET. GRIP | MQ 44 | 5 | 0,9 | 18,75 | 48 | 43,2 | 900 | ● |
| 7,5x60 cm | 9,5 mm | BATTISCOPIA | PZ 3 | 12 | - | - | - | - | - | ● |




 Stoneone Dark 60x120


 Stoneone Grey 60x120





 Stoneone Grey 60x60

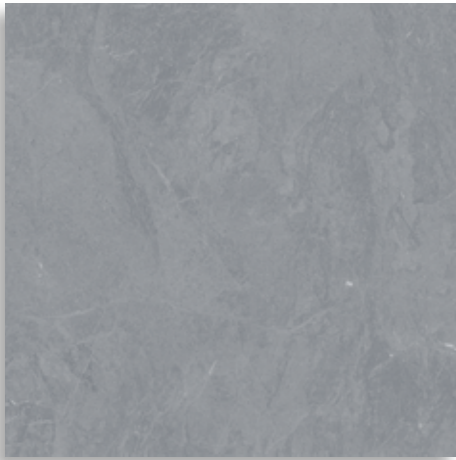


 Stoneone Dark 60x120

 Stoneone Grey 60x120

30x60 - 12"x24" / 60x60 - 24"x24" / 60x120 - 24"x48"

Gres Porcellanato Digitale - Grès Cérame Digital - Digital Porcelain - Digital Glasiertes Feinsteinzeug



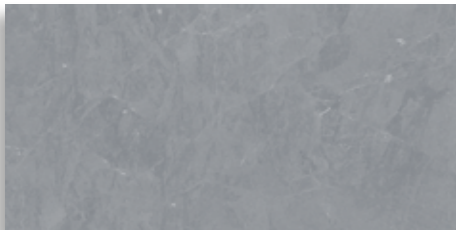
Grey 60x60cm Rettificato

D06662R
Grip **D066621R**



Grey 59,5x119,20cm Rettificato

D061267R

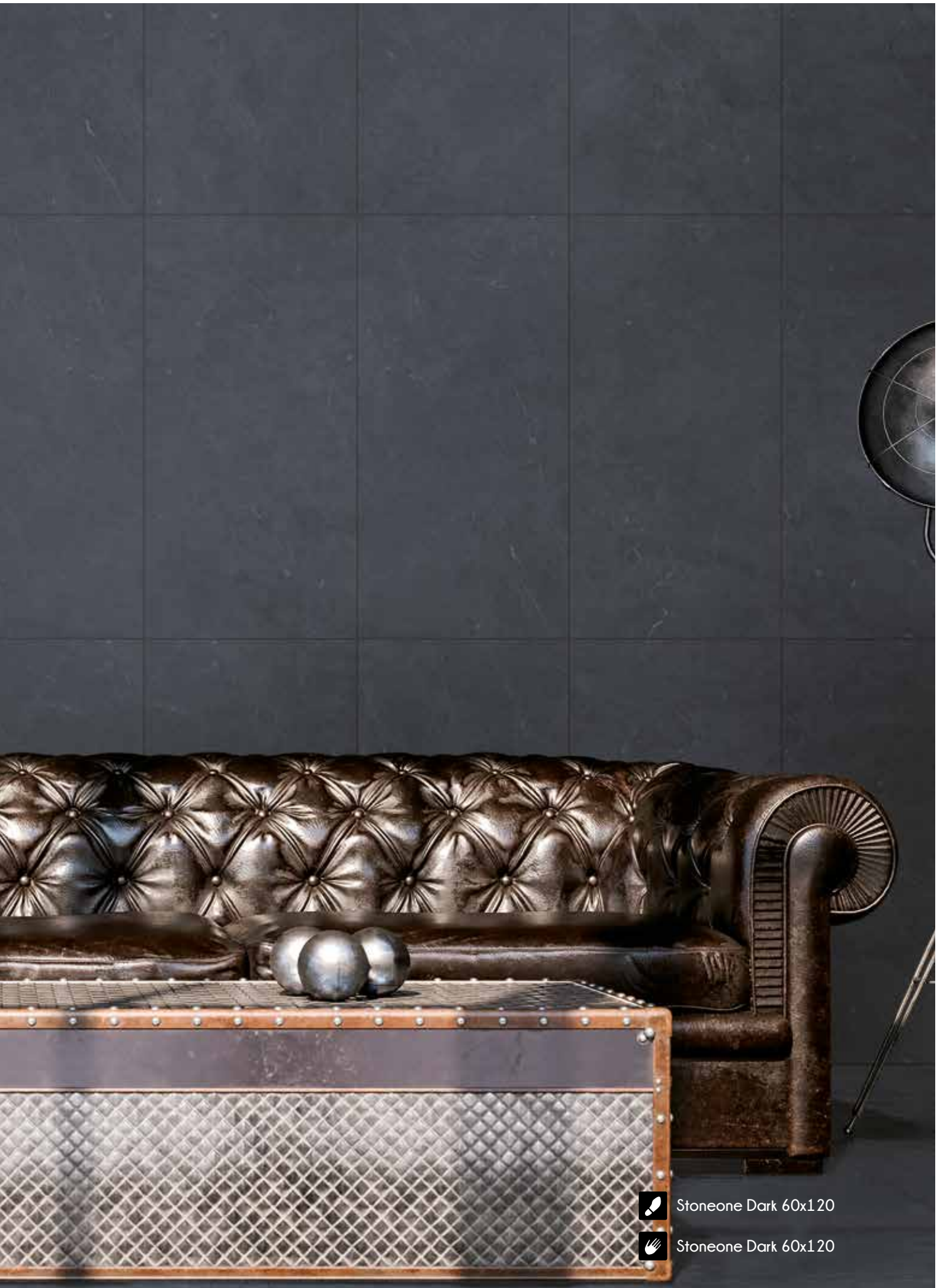


Grey 30x60cm Rettificato

D03662R
Grip **D036621R**

| Formato Size Dimensions Abmessungen | Spessore Thickness Epaisseur Stärke | Descrizione Description Description Beschreibung | UM | Codice Prezzo Price Code Code de prix Preiscode | pz/collo pcs/box pc/boite stk/ktn | mq/collo sqm/box m/boite qm/ktn | kg/collo kg/box kg/boite kg/ktn | coll/pallet box/europallet boites/europallet ktn/europallet | mq/europallet sqm/europallet m/europallet qm/europallet | kg/europallet kg/europallet kg/europallet kg/europallet | spallettizzabile spallettizzabile spallettizzabile spallettiserbar |
|--|--|---|----|--|--|--|--|--|--|--|---|
| 59,5x119,2 cm | 9,5 mm | FONDO RET. | MQ | 47 | 2 | 1,42 | 30 | 36 | 51,12 | 1080 | ● |
| 59,5x59,5 cm | 9,5 mm | FONDO RET. | MQ | 39 | 3 | 1,08 | 22 | 40 | 43,2 | 880 | ● |
| 59,5x59,5 cm | 9,5 mm | FONDO RET. GRIP | MQ | 44 | 3 | 1,08 | 22 | 40 | 43,2 | 880 | ● |
| 29,65x59,5 cm | 9,5 mm | FONDO RET. | MQ | 39 | 5 | 0,9 | 18,75 | 48 | 43,2 | 900 | ● |
| 29,65x59,5 cm | 9,5 mm | FONDO RET. GRIP | MQ | 44 | 5 | 0,9 | 18,75 | 48 | 43,2 | 900 | ● |
| 7,5X60 cm | 9,5 mm | BATTISCOPIA | PZ | 3 | 12 | - | - | - | - | - | ● |







Stoneone Dark 60x120



Stoneone Dark 60x120



 Stoneone Dark 60x120

 Stoneone Dark 60x120

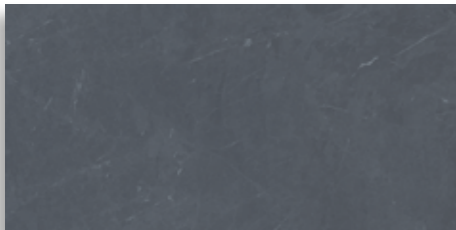
30x60 - 12"x24" / 60x60 - 24"x24" / 60x120 - 24"x48"
Gres Porcellanato Digitale - Grès Cérame Digital - Digital Porcelain - Digital Glasiertes Feinsteinzeug



Dark 60x60cm Rettificato **D06661R**
Grip D066611R



Dark 59,5x119,20cm Rettificato **D061266R**




Dark 30x60cm Rettificato **D03661R**
Grip D036611R

| Formato Size Dimensions Abmessungen | Spessore Thickness Epaisseur Stärke | Descrizione Description Description Beschreibung | UM | Codice Prezzo Price Code Code de prix Preiscode | pz/collo pcs/box pc/boite stk/ktn | mq/collo sqm/box m/boite qm/ktn | kg/collo kg/box kg/boite kg/ktn | colli/pallet box/europallet boites/europallet ktn/europallet | mq/europallet sqm/europallet m/europallet qm/europallet | kg/europallet kg/europallet kg/europallet kg/europallet | spallettizzabile spallettizzabile spallettizzabile spallettiserbar |
|--|--|---|----|--|--|--|--|---|--|--|---|
| 59,5x119,2 cm | 9,5 mm | FONDO RET. | MQ | 47 | 2 | 1,42 | 30 | 36 | 51,12 | 1080 | ● |
| 59,5x59,5 cm | 9,5 mm | FONDO RET. | MQ | 39 | 3 | 1,08 | 22 | 40 | 43,2 | 880 | ● |
| 59,5x59,5 cm | 9,5 mm | FONDO RET. GRIP | MQ | 44 | 3 | 1,08 | 22 | 40 | 43,2 | 880 | ● |
| 29,65x59,5 cm | 9,5 mm | FONDO RET. | MQ | 39 | 5 | 0,9 | 18,75 | 48 | 43,2 | 900 | ● |
| 29,65x59,5 cm | 9,5 mm | FONDO RET. GRIP | MQ | 44 | 5 | 0,9 | 18,75 | 48 | 43,2 | 900 | ● |
| 7,5X60 cm | 9,5 mm | BATTISCOPIA | PZ | 3 | 12 | - | - | - | - | - | ● |







 Stoneone Taupe 60x120

 Stoneone Beige 60x120

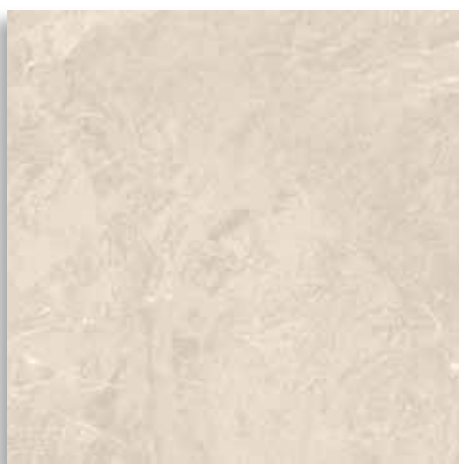


 Stoneone Taupe 60x120

 Stoneone Beige 60x120

30x60 - 12"x24" / 60x60 - 24"x24" / 60x120 - 24"x48"

Gres Porcellanato Digitale - Grès Cérame Digital - Digital Porcelain - Digital Glasiertes Feinsteinzeug



Beige 60x60cm Rettificato **D06660R**
Grip **D066601R**



Beige 59,5x119,20cm Rettificato **D061265R**




Beige 30x60cm Rettificato **D03660R**
Grip **D036601R**

| Formato Size Dimensions Abmessungen | Spessore Thickness Epaisseur Stärke | Descrizione Description Description Beschreibung | UM | Codice Prezzo Price Code Code de prix Preiscode | pz/collo pcs/box pc/boite stk/ktn | mq/collo sqm/box m/boite qm/ktn | kg/collo kg/box kg/boite kg/ktn | coll/pallet box/europallet boites/europallet ktn/europallet | mq/europallet sqm/europallet m/europallet qm/europallet | kg/europallet kg/europallet kg/europallet kg/europallet | spallettizzabile spallettizzabile spallettizzabile spallettisierbar |
|--|--|---|----|--|--|--|--|--|--|--|--|
| 59,5x119,2 cm | 9,5 mm | FONDO RET. | MQ | 47 | 2 | 1,42 | 30 | 36 | 51,12 | 1080 | ● |
| 59,5x59,5 cm | 9,5 mm | FONDO RET. | MQ | 39 | 3 | 1,08 | 22 | 40 | 43,2 | 880 | ● |
| 59,5x59,5 cm | 9,5 mm | FONDO RET. GRIP | MQ | 44 | 3 | 1,08 | 22 | 40 | 43,2 | 880 | ● |
| 29,65x59,5 cm | 9,5 mm | FONDO RET. | MQ | 39 | 5 | 0,9 | 18,75 | 48 | 43,2 | 900 | ● |
| 29,65x59,5 cm | 9,5 mm | FONDO RET. GRIP | MQ | 44 | 5 | 0,9 | 18,75 | 48 | 43,2 | 900 | ● |
| 7,5x60 cm | 9,5 mm | BATTISCOPIA | PZ | 3 | 12 | - | - | - | - | - | ● |






 Stoneone Taupe 60x120

 Stoneone Beige 60x120



 Stoneone Taupe 60x120

 Stoneone Beige 60x120

30x60 - 12"x24" / 60x60 - 24"x24" / 60x120 - 24"x48"

Gres Porcellanato Digitale - Grès Cérame Digital - Digital Porcelain - Digital Glasiertes Feinsteinzeug



Taupe 60x60cm Rettificato **D06663R**
Grip **D066631R**



Taupe 59,5x119,20cm Rettificato **D061268R**



Taupe 30x60cm Rettificato **D03663R**
Grip **D036631R**

| Formato Size Dimensions Abmessungen | Spessore Thickness Epaisseur Stärke | Descrizione Description Description Beschreibung | UM | Codice Prezzo Price Code Code de prix Preiscode | pz/collo pcs/box pc/boite stk/ktn | mq/collo sqm/box m/boite qm/ktn | kg/collo kg/box kg/boite kg/ktn | coll/pallet box/europallet boites/europallet ktn/europallet | mq/europallet sqm/europallet m/europallet qm/europallet | kg/europallet kg/europallet kg/europallet kg/europallet | spallettizzabile spallettizzabile spallettizzabile spallettiserbar |
|--|--|---|----|--|--|--|--|--|--|--|---|
| 59,5x119,2 cm | 9,5 mm | FONDO RET. | MQ | 47 | 2 | 1,42 | 30 | 36 | 51,12 | 1080 | ● |
| 59,5x59,5 cm | 9,5 mm | FONDO RET. | MQ | 39 | 3 | 1,08 | 22 | 40 | 43,2 | 880 | ● |
| 59,5x59,5 cm | 9,5 mm | FONDO RET. GRIP | MQ | 44 | 3 | 1,08 | 22 | 40 | 43,2 | 880 | ● |
| 29,65x59,5 cm | 9,5 mm | FONDO RET. | MQ | 39 | 5 | 0,9 | 18,75 | 48 | 43,2 | 900 | ● |
| 29,65x59,5 cm | 9,5 mm | FONDO RET. GRIP | MQ | 44 | 5 | 0,9 | 18,75 | 48 | 43,2 | 900 | ● |
| 7,5X60 cm | 9,5 mm | BATTISCOPIA | PZ | 3 | 12 | - | - | - | - | - | ● |



Uffici e Sala Mostra:
41053 Maranello - loc. Bell'Italia (MO) - Via Martinella, 74 - ITALY
Tel centralino +39,0536.934811 - Fax +39,0536.934819
info@ceramicaopera.it - www.ceramicaopera.it

Stabilimento:
41100 Camposanto (MO) - Polo Industriale S.Felice s/Panaro - Via Ponte Bianco, 22